

Session 2: Medium-Dry Styles and Single Vineyard Wines



Silver Thread is perched on the east side of Seneca Lake very close to the water.

Doyle Fournier Vineyard has a western aspect and sits uphill from the eastern shore of Seneca Lake.

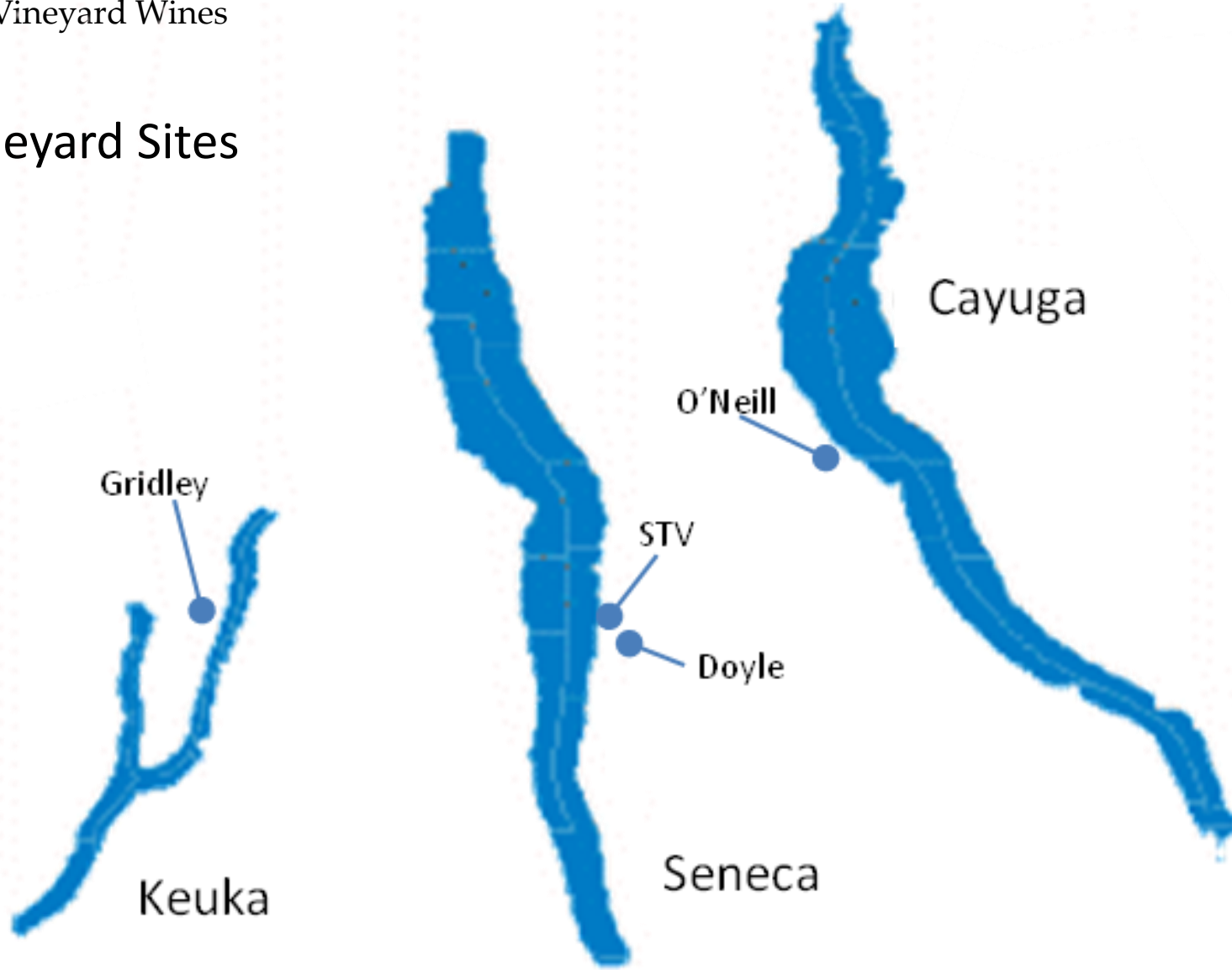


Gridley Bluff Point Vineyard has an eastern aspect and overlooks the eastern fork of Keuka Lake.



Session 2: Medium-dry Styles and
Single Vineyard Wines

Map of Vineyard Sites





An old, low-yielding Riesling vine grows in fescue at Silver Thread Vineyard



The first Riesling vines were planted in 1982

Soil profile of Silver Thread Vineyard showing shale formation



SILVER THREAD

Riesling Expert



Session 2: Medium-Dry Styles and Single Vineyard Wines



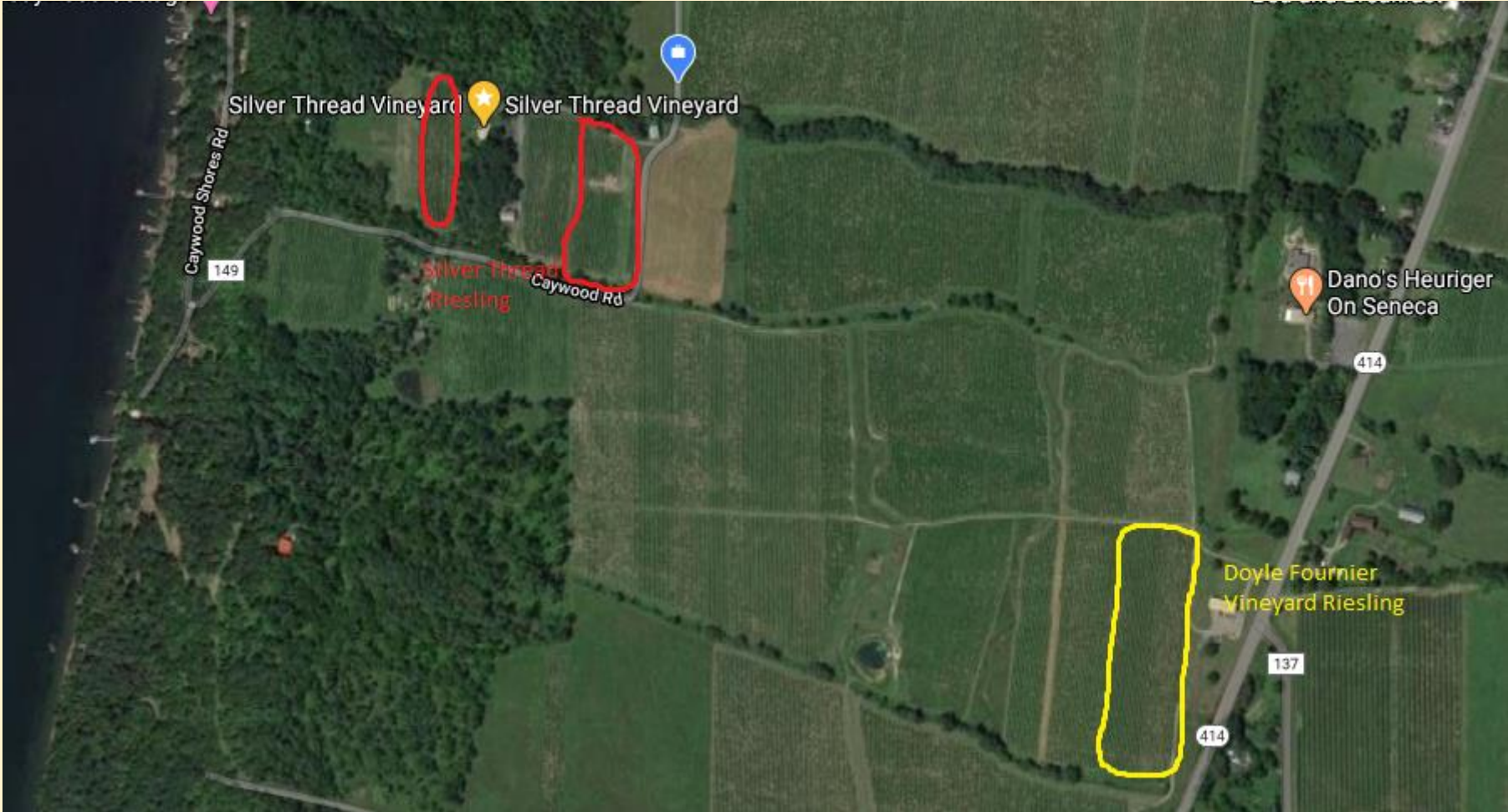
Gridley Bluff Point
Vineyard is owned
and operated by
Donna and Louis
Gridley



Doyle Fournier
Vineyard is
owned and
operated by
Matt and Carre
Doyle

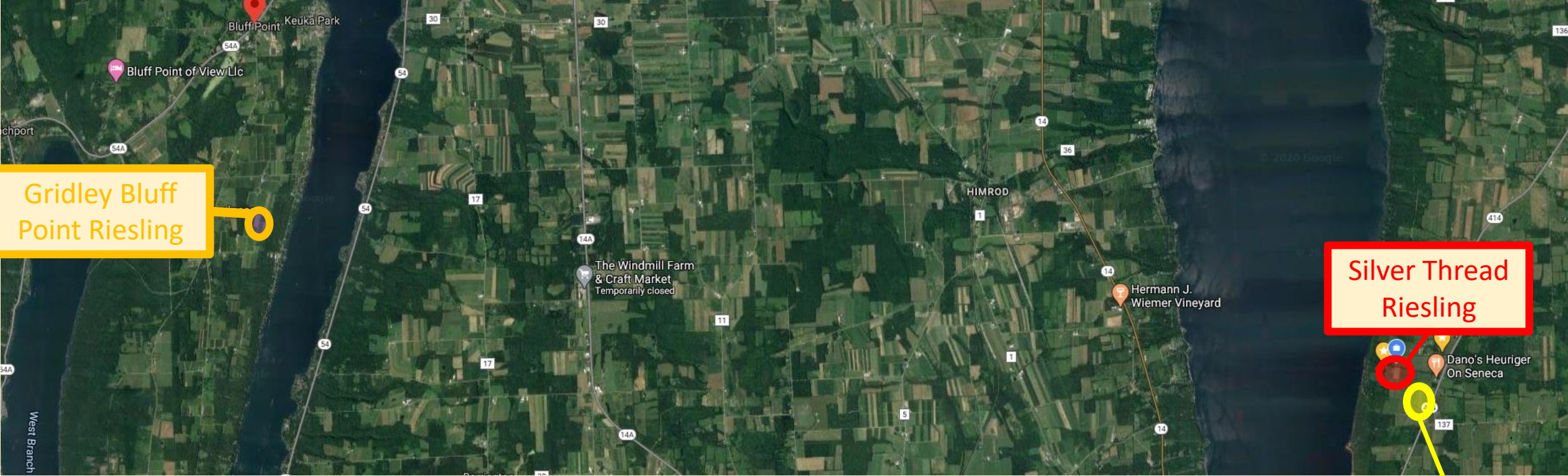


Session 2: Medium-Dry Styles and Single Vineyard Wines



SILVER THREAD 
Riesling Expert

Session 2: Medium-Dry Styles and Single Vineyard Wines



Gridley Bluff
Point Riesling

Silver Thread
Riesling

Doyle
Fournier
Riesling

Session 2: Medium-Dry Styles and Single Vineyard Wines

Glossary of Terms: *Oxford Companion to Wine third ed.; Robinson J.; 2006*

Grand Cru—literally “great growth” in French. An elevated appellation accorded to several specific vineyards in Alsace and Burgundy.

Classification—a system used in many regions of France and Germany to rank the quality of the vineyards and/or estates; ex: Einzellagen (“individual site”) in Germany, Grand Cru in Alsace

Scoring—when wine writers award scores to individual wines, thereby guiding wine buyers using a universal numerical language. Some argue that scores have become more important than classification in recent decades.

Vineyard Site Selection—the single most important aspect of grape production in the New World. Considerations include elevation/altitude, mesoclimate, aspect; and soil condition, fertility, drainage, and acidity

Aspect—the direction in which a slope faces, an especially important characteristic of vineyard sites in cool climates

Mesoclimate—site climate, usually on the scale of tens or hundreds of meters, used to describe the conditions of a particular vineyard.

Microclimate—widely misused term meaning strictly the climate within a defined and very restricted space or position. In viticulture, it might be at specified positions between rows of vines, or distances above the ground.